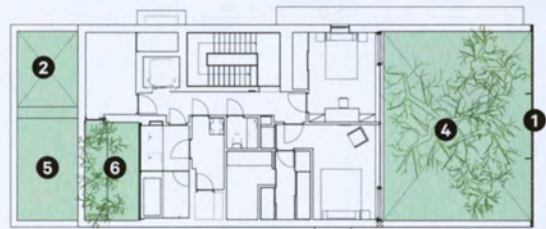




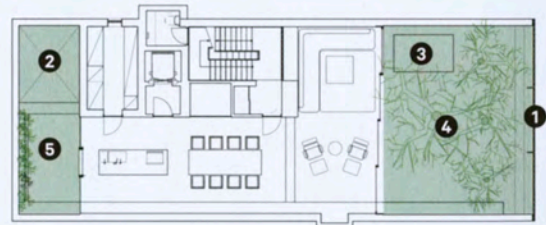
Each room of the house faces at least one garden, resulting in an atmosphere of scenic nature throughout the project. Photos Koji Fujii / Nacása & Partners

Urban Gardens

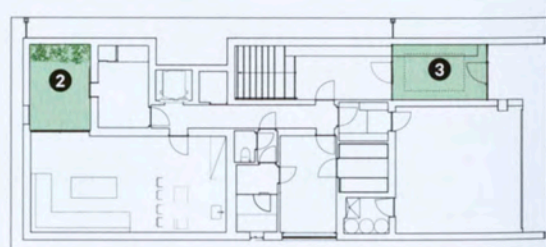
The house has four indoor gardens, which the clients – a couple and their two children – enjoy from the outside, looking in, and from the inside, as places of relaxation. The largest of these, the Glass Garden, is on the street side, directly behind the façade. Planted here are over 20 species of trees and plants, including Japanese maple, Juneberry and lime. The selection of greenery is intended to reflect the changing seasons and to illustrate the natural flow present in this verdant part of the house. On the rear side are the Ivy Garden and the Japanese Garden, which form natural buffers between the interior and the outdoor surroundings. Despite the urban location, Optical Glass House is unusually peaceful inside.



Second floor.



First floor.



Ground floor.

1. Optical glass façade
2. S Monadelphia room
3. Water-basin skylight
4. Iroha Momiji room
5. Ivy room
6. Olive room



Glass Garden – the largest of the indoor gardens – contains over 20 species of plants and trees and a permanent water basin.