

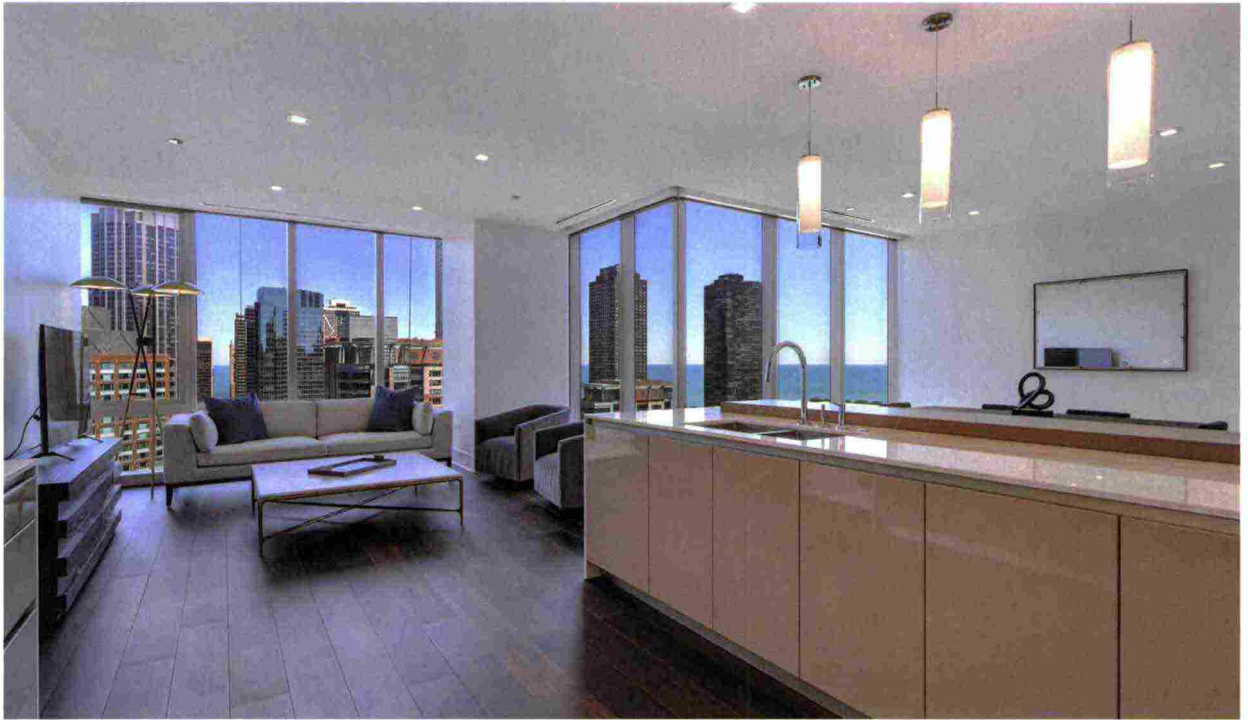
## Gemstone-inspired design

**The Residences at St. Regis:** Chicago's third tallest building makes the skyline sparkle. Sapphire, amethyst, fluorite and topaz are the muses for HBA Los Angeles' interior design of the magnificent skyscraper created by Studio Gang. The architectural masterpiece borrows its bold, dynamic volumes from crystal formations and other shapes found in nature

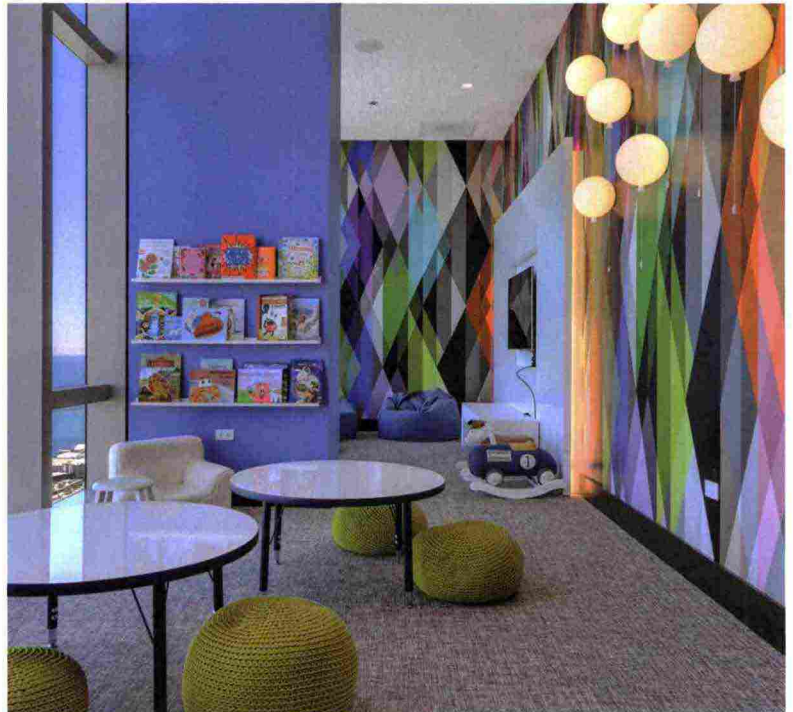
**W**ith its form and structure inspired by fluorite's crystalline shapes, Jeanne Gang's visionary concept for the Residences at St. Regis - Vista Tower lights up Chicago's skyline. Located in the Lakeshore East neighborhood facing majestic Lake Michigan, this innovative tower with its 101 floors of pure avant-garde inspiration, developed by Magellan

Development Group and built by bKL Architecture, is a work of engineering excellence. "We use ordinary materials," says Gang, "to create extraordinary buildings." The unique structure comprising three interconnected towers and a suspended central stem is enveloped by glass facades that transform the building into a mirror of light and shadow. In addition to the hotel with





its 191 rooms and luxury amenities like the Sky Bar, gourmet restaurant, fitness center, pool and spa, the 393 Residences at the St. Regis showcase the creative vision of Hirsch Bedner Associates Los Angeles (HBA). Furnishings and lighting by internationally known brands like Paola Lenti, Cattelan Italia, Blu Dot, Herman Miller, Stellar Works, RH, Flos, Lumens, Kuzco, Sonneman, Snaidero, Sicis and Cesarstone adorn these classically refined, contemporary living spaces. Residential amenities include panoramic terraces, an open-air pool, a conference center, a private viewing room and a golf lounge. The entire project was informed by nature and inspired by fluorites and sapphires. "We explored the fundamental splendor found in nature by examining crystals, minerals and gems ... which then informed our design decision to write a story behind each finish package. The overarching narrative is a perceptive response to location, architecture and overall vision," says HBA Los Angeles Partner Kathleen Dauber. "This project is built upon craftsmanship and a shared aspiration to achieve the extraordinary. We are quite proud to be a part of it." The four housing types are based on four design palettes,





Owner: Magellan Development Group  
 Main Contractor: McHugh  
 Architectural design: Studio Gang  
 Architect of record: bKL Architecture  
 Associate architect: Gensler  
 Interior design: HBA/Hirsch Bedner Associates  
 Structural engineer: Magnusson Klemencic Associates  
 MEP Engineering design assistant: dbHMS  
 Civil engineer: Mackie Consultants  
 Landscape architect consultant: OLIN  
 Façade consultant: CDC  
 Lighting design: Illuminate Lighting Design  
 Graphics: HBA DNA  
 Art consultant: Chicago Art Source  
 Furnishings: A Rudin, All Modern, Arteriors, Beaufurn, Blu Dot, Cattelan Italia, CBW, Charleston Forge, Charter Furniture, D'style, Design Within Reach, Falcon, Global Views, Herman Miller, Holly Hunt, IAP, Industry West, Made Goods, One Kings Lane, Misuraemme, Modloft, Paola Lenti, RH, Stellar Works, Usona, West Elm, YLiving  
 Lighting: Flos, Hubbardton Forge, Jonathan Browning, Lumens, Kuzco, Paola Lenti, RH, Usona, Sonneman, YLighting  
 Acoustical ceilings: Armstrong, Hunter Douglas TechStyle  
 Cabinetwork and custom woodwork: Beaubois, Snaidero  
 Paints and stains: Sherwin Williams  
 Wallcoverings: Wolf-Gordon, Phillip Jeffries, MDC  
 Interior Solutions, Colour & Design, Maya Romanoff  
 Paneling: LBI/Boyd  
 Solid surfacing: Caesarstone  
 Floor and wall tile: Emser Tile, Arizona Tile, Artistic Tile, Atlas Concorde, Crossville Studios  
 Carpet: Bloomsburg Carpet  
 Special interior finishes: Kinon, SICIS  
 Wood flooring: Junckers

.....  
 Author: Anna Casotti  
 Photo credits: Angie McMonigal,  
 Magellan Development Group

each identified with a gem's essence. The brilliance and intensity of sapphire is translated into hues of indigo offset by Italian white lacquer cabinets, Montclair Danby marble counters and monochrome marble bathrooms. Amethyst's ability to dissolve negative energy is manifested through violet tones, hardwood floors and Madreperola quartzite. The sun's energy as transmitted through topaz is expressed by a welcoming atmosphere of warm, luminous tones, oak wood, white Italian marble and sea pearl quartzite. Finally, the vibrant energy of fluorite crystals is transposed into fine materials like walnut wood, golden quartzite and bronze fixtures. In this rare marriage between a stepped façade and clean interior lines, HBA Los Angeles' design brings Studio Gang's contemporary vision, And its delicate perception of mother nature, inside the homes.

