



Navajo è un tappeto modulare per esterni e interni realizzato dalla unione di trecce cucite in senso longitudinale.

Il tappeto è rifinito alle estremità con una frangia che risulta disposta sempre sul lato corto.

Le trecce utilizzate sono tutte dello stesso mélange di colore, ma propongono intrecci differenti, ripetuti a formare la superficie del tappeto secondo uno schema prestabilito.

È prevista la scelta di un solo mélange di colore.

La struttura tessile del tappeto è libera: un calpestio intenso può provocare una variazione dimensionale del tappeto.

Il tappeto Navajo è sconsigliato per aree soggette a umidità elevata e a piogge forti e frequenti.

TANV01



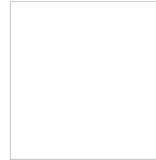
cm 200 x 200
79" x 79"

TANV02



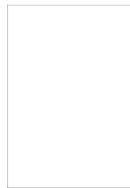
cm 200 x 240
79" x 94"

TANV03



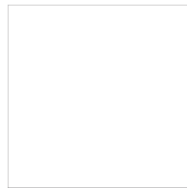
cm 240 x 240
94" x 94"

TANV04



cm 200 x 300
79" x 118"

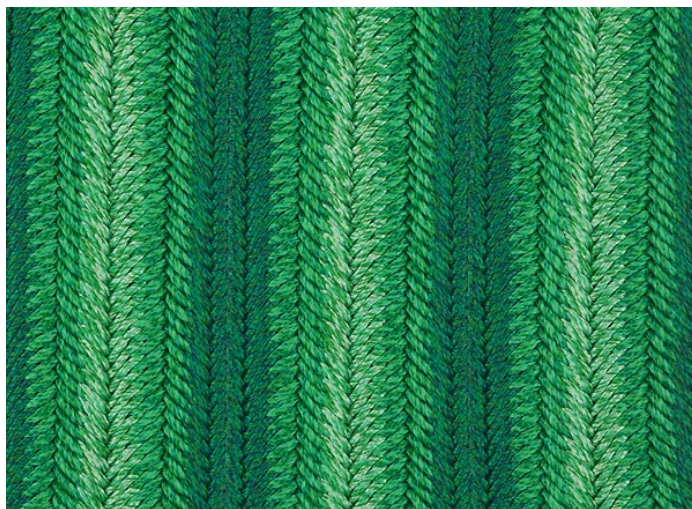
TANV05



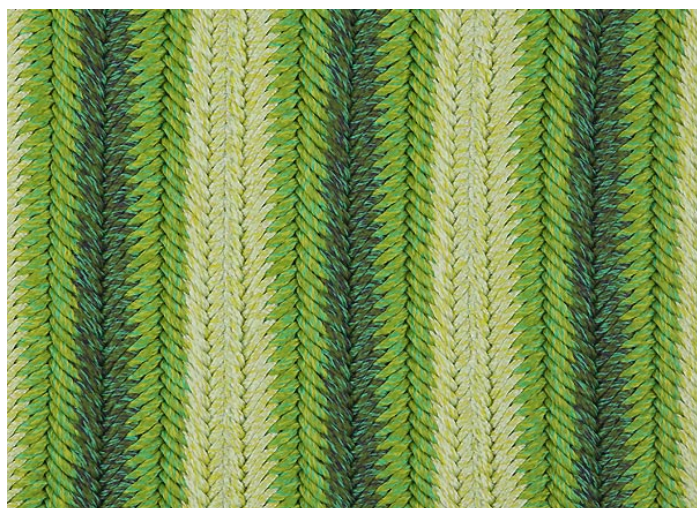
cm 300 x 300
118" x 118"



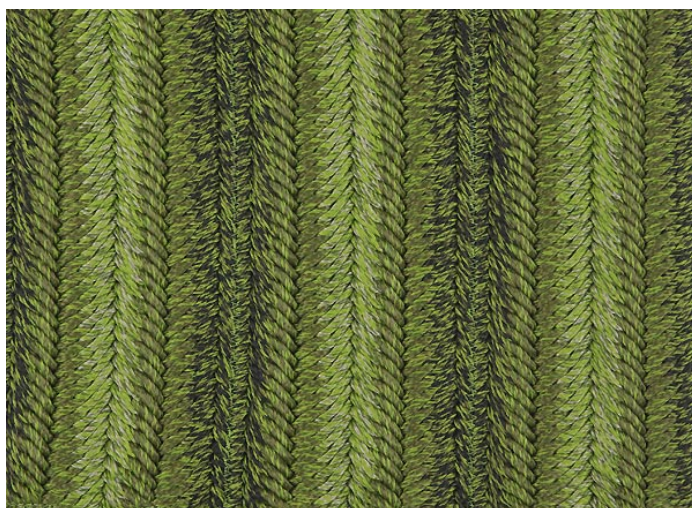
NV778



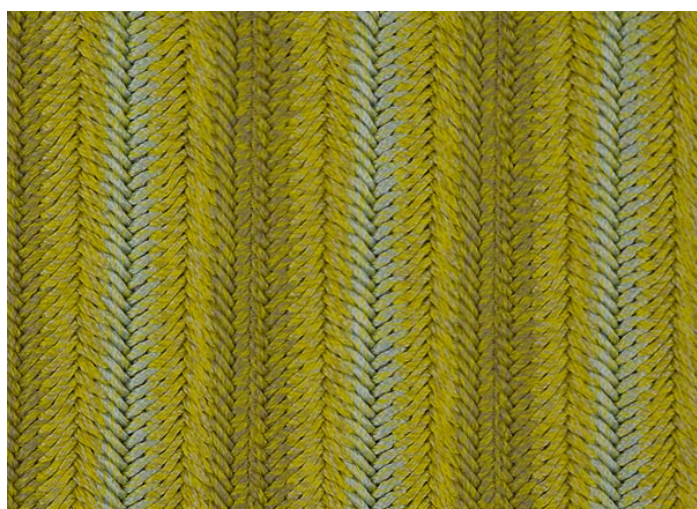
NV765



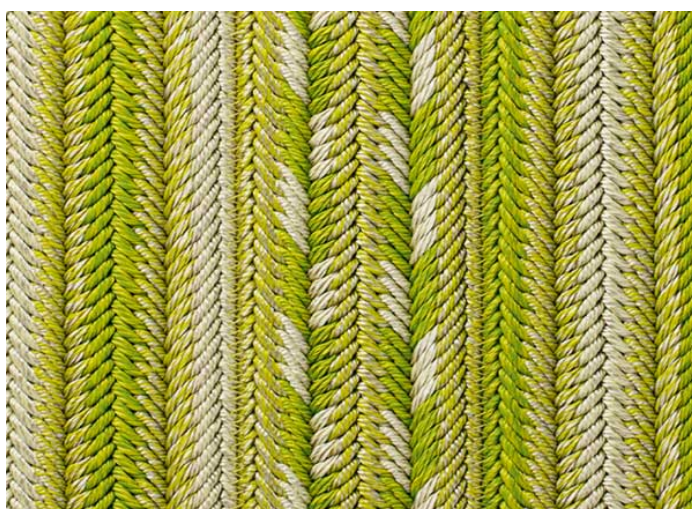
NV783



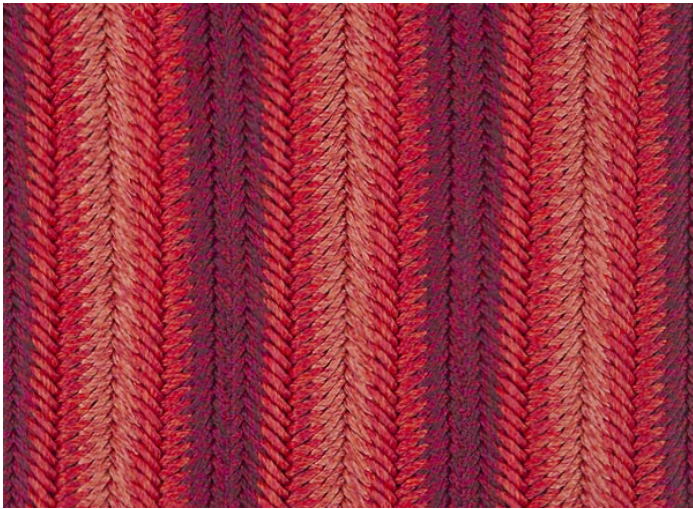
NV764



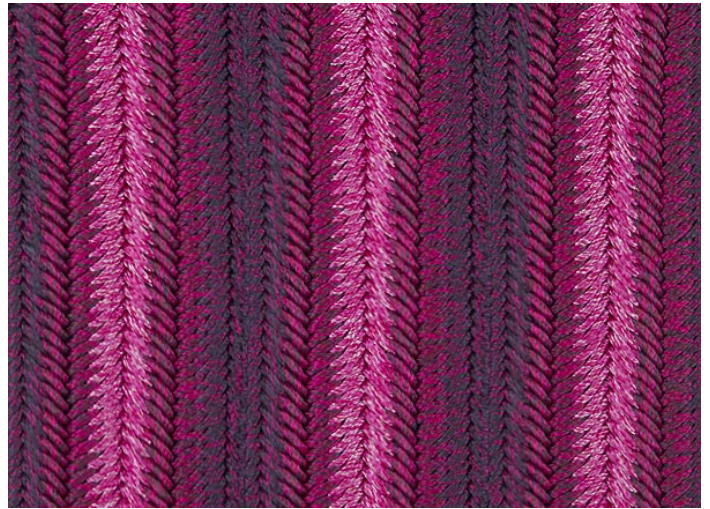
NV758



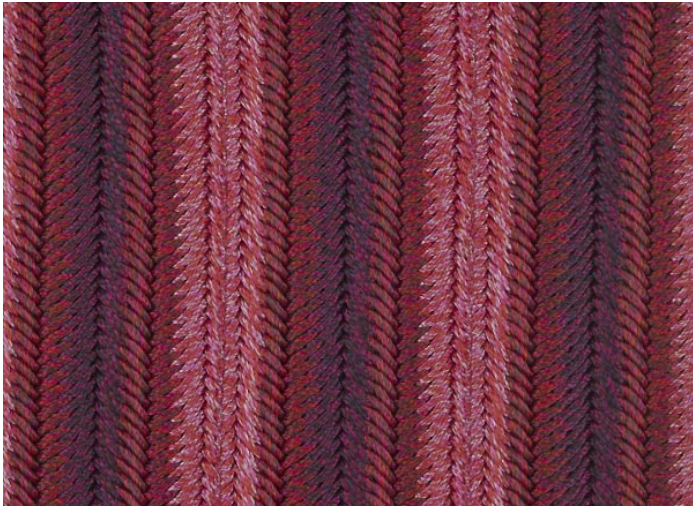
NV787



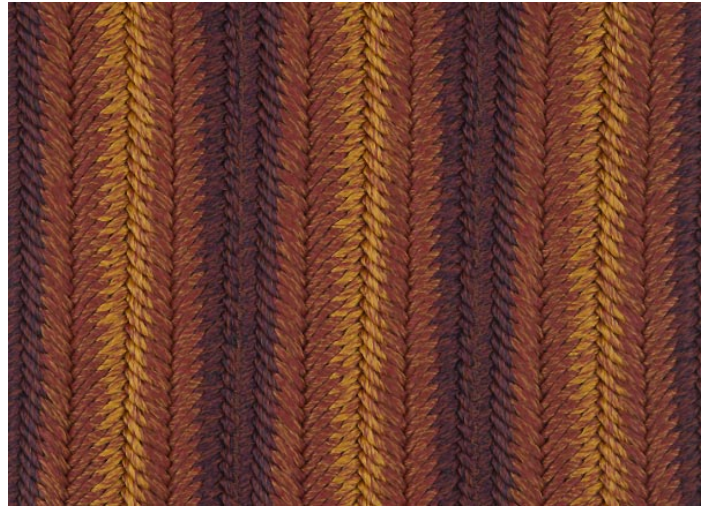
NV773



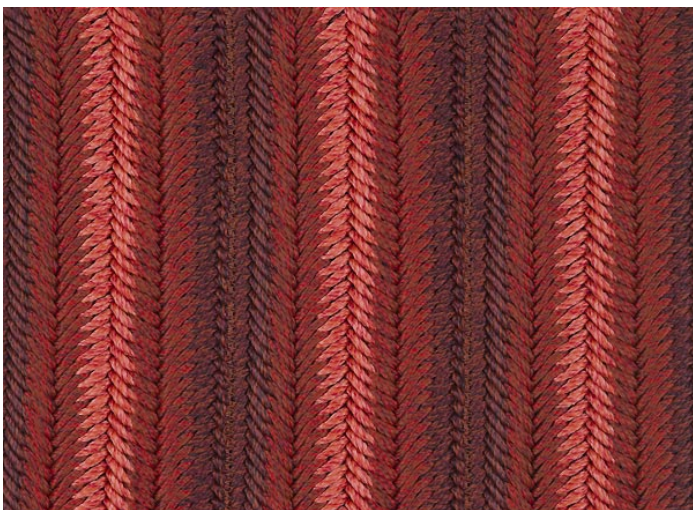
NV775



NV784



NV774



NV755



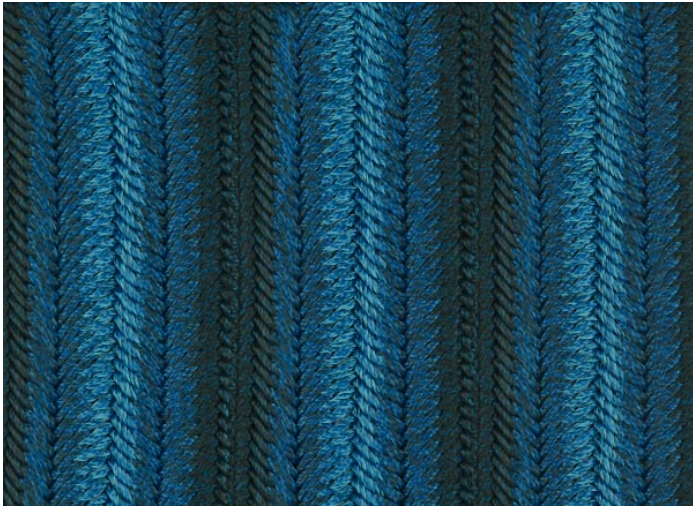
NV769



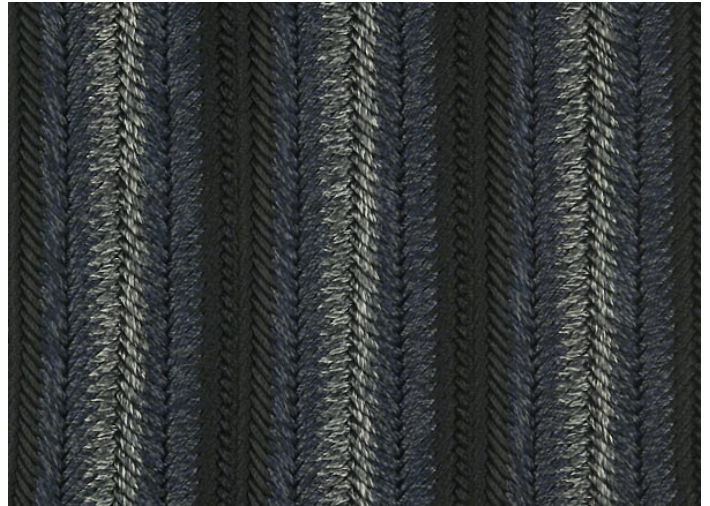
NV759



NV768



NV767



NV756



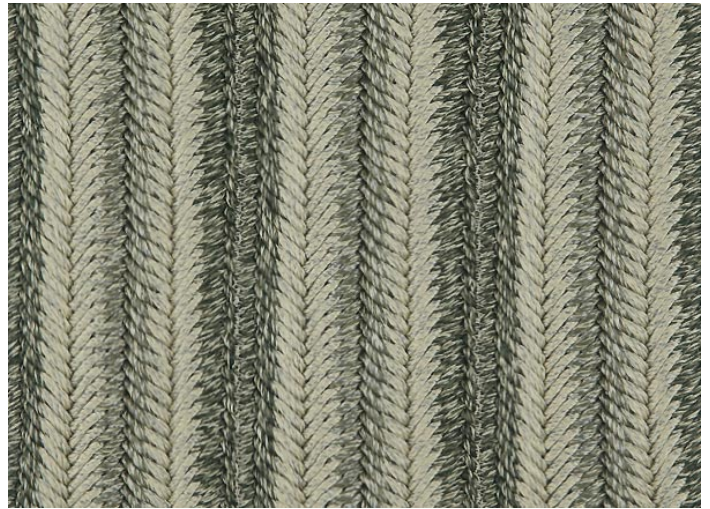
NV754



NV757



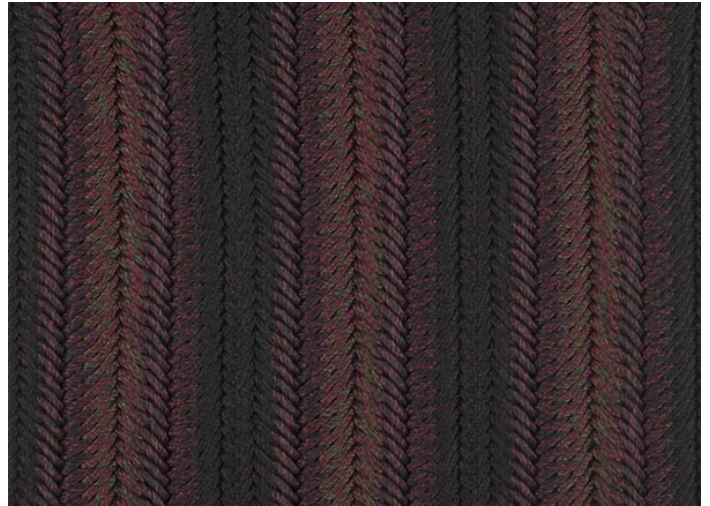
NV766



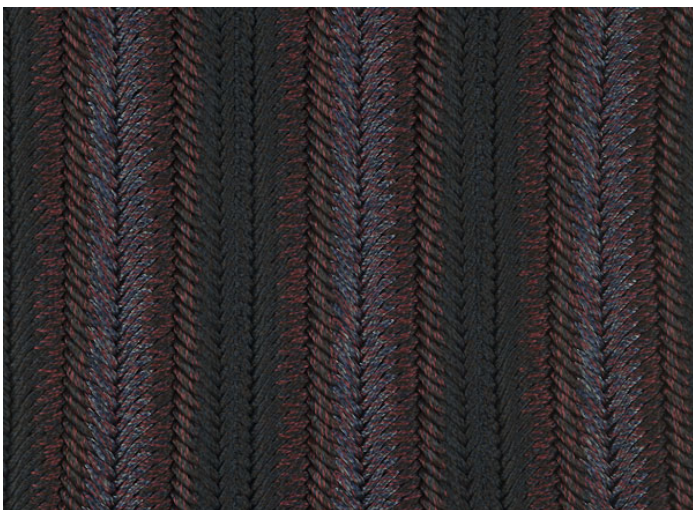
NV776



NV777



NV763



NV753